



City Contact Information



Mona Ferguson
Executive Director

director@lamesadevelopment.org

123 Main Avenue
Lamesa, TX 79331

(806) 872-2207 (office)
(806) 200-4783 (cell)

Focus Properties

Retail Strategies has a catalogue of retail commercial real estate properties in this market.



For more information, please contact the Portfolio Director and/or Retail Development Director listed on the front of this guide.

Demographics (15 Minute Drive Time)



Population
12,587



Average Age
37.4



Household Income (Median)
\$45,292



Household Income (Average)
\$64,760



Number of Households
3,937



Growth Rate
1.68%

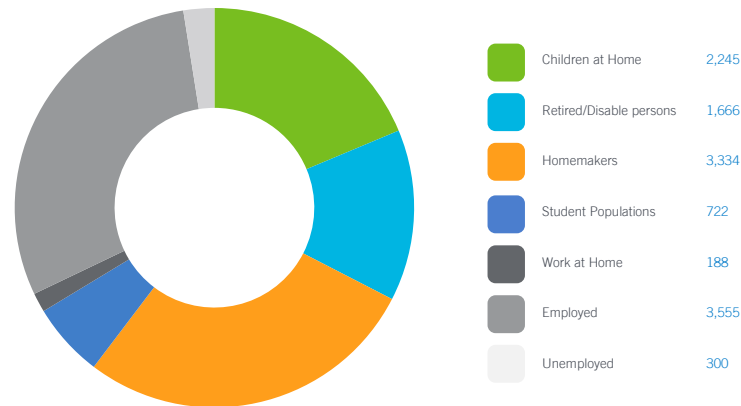
Peer Analysis

The Peer Analysis, built by Retail Strategies along with our analytics partner (Tetrad), identifies analogue retail nodes within a similar demographic and retail makeup. The Peer Analysis is derived from a 5 or 10 minute drive time from major comparable retail corridors throughout the country. The variables used are population, income, daytime population, market supply and gross leasable area. The following are retail areas that most resemble this core city:

Peer Trade Areas

- Eustace, TX 306 Us Highway 175 W
- Livingston, TX 5419 Us Highway 190 E
- Brookshire, TX 3034 Fm 359 Rd
- Graham, TX 2100 State Highway 16 S
- Daingerfield, TX 309 E W M Watson Blvd
- Port Isabel, TX 1740 Highway 100
- Zapata, TX 132 S Us Highway 83

Daytime Population **12,008** (15 Minute Drive Time)



Focus Categories

The top categories for focused growth in the municipality are pulled from a combination of leakage reports, peer analysis, retail trends and real estate intuition. Although these are the top categories, Retail Strategies' efforts are inclusive beyond the defined list. *Let us know how we can help you find a site!*



General Merchandise



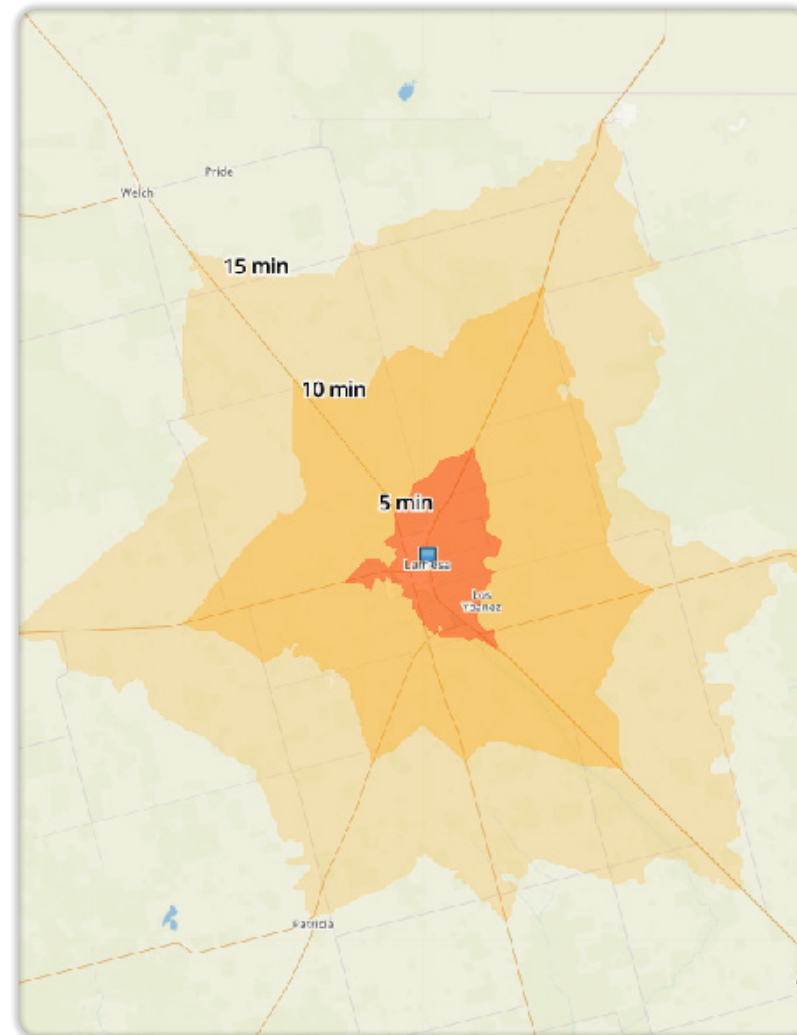
Restaurants



Clothing & Accessories



Building Materials & Garden



DEMOGRAPHIC PROFILE	3 Mile Radius	5 Mile Radius	10 Mile Radius
2022 Estimated Population	11,299	11,767	12,333
Daytime Population	10,544	11,291	11,642
Median HH Income	\$42,313	\$42,873	\$44,829
Number of Households	3,512	3,644	3,840

	5 Minute DT	10 Minute DT	15 Minute DT
2022 Estimated Population	6,641	11,942	12,587
Daytime Population	7,863	11,304	12,008
Median HH Income	\$44,641	\$43,411	\$45,292
Number of Households	2,468	3,697	3,937

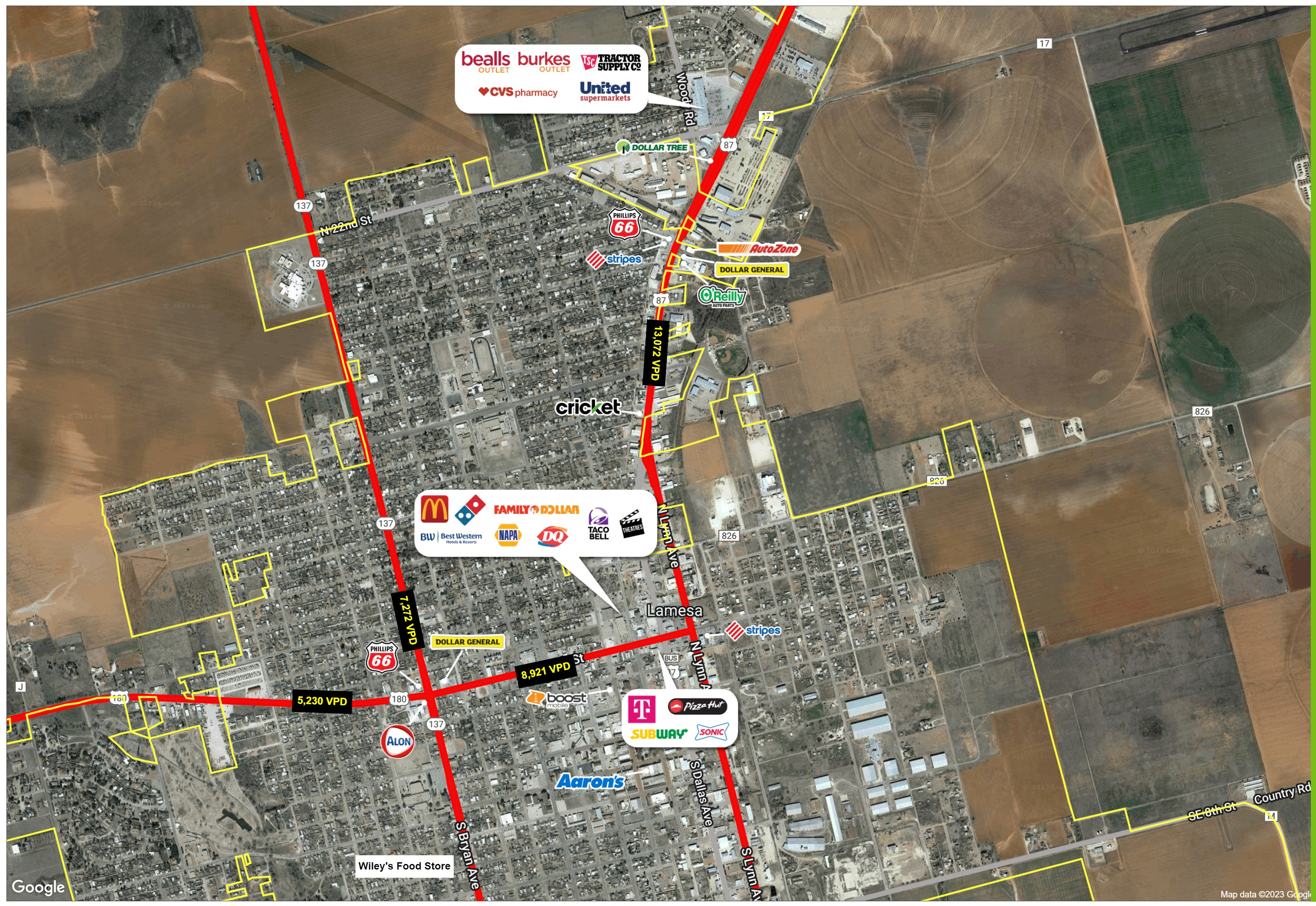


Madison Neal
Portfolio Director
mneal@retailstrategies.com
205.903.1067 cell



Megan Jimenez
Retail Development Coordinator
mjimenez@retailstrategies.com
817.470.5960 cell





LAMESA, TEXAS

Major Retail & Restaurants

Map data ©2023 Google